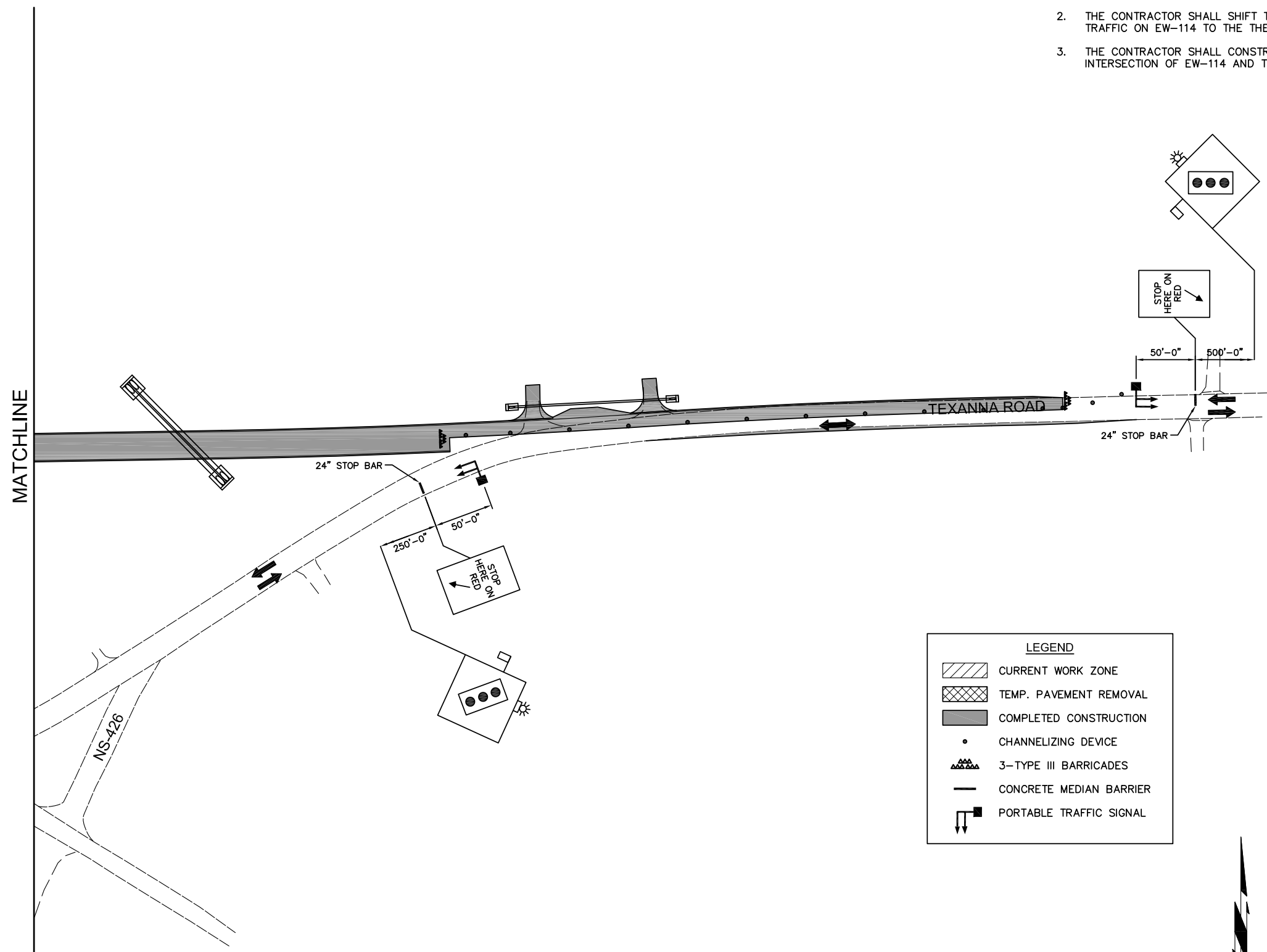


REVISIONS		
REV. NO.	DESCRIPTION	DATE
-	-	-

SUGGESTED SEQUENCE OF CONSTRUCTION

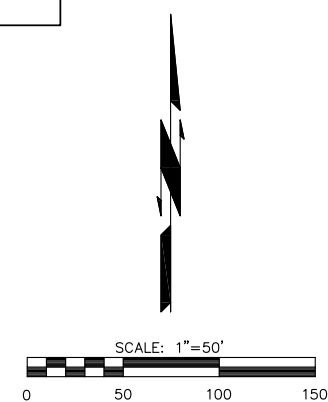
PHASE 3

1. THE CONTRACTOR SHALL ADJUST TRAFFIC CONTROL DEVICES AND LEAVE SIGNALIZATION IN PLACE.
2. THE CONTRACTOR SHALL SHIFT TRAFFIC ALONG TEXANNA ROAD TO THE NEWLY CONSTRUCTED PAVEMENT ON THE NORTH AND THE TRAFFIC ON EW-114 TO THE THE NEWLY CONSTRUCTED PAVEMENT ON THE WEST.
3. THE CONTRACTOR SHALL CONSTRUCT THE SOUTH SIDE OF TEXANNA AT THE WEST END OF THE PROJECT AND THE PROPOSED INTERSECTION OF EW-114 AND TEXANNA ROAD.



LEGEND

	CURRENT WORK ZONE
	TEMP. PAVEMENT REMOVAL
	COMPLETED CONSTRUCTION
	CHANNELIZING DEVICE
	3-TYPE III BARRICADES
	CONCRETE MEDIAN BARRIER
	PORTABLE TRAFFIC SIGNAL



DESIGN		GCS		EW115 TEXANNA CREEK	MCINTOSH CO.
DRAWN		GLH		OKLAHOMA DEPARTMENT OF TRANSPORTATION	
CHECKED		GCS			
APPROVED				CONSTRUCTION SEQUENCING PHASE 3 (SHEET 2 OF 2)	
SQUAD		KCS		STATE JOB NO. 29374(04)	SHEET NO. T006

N:\AF34-CED2-1 - MCINTOSH-BR062\DRAWINGS\AF34-SEQUENCING.DWG 8/11/2017